

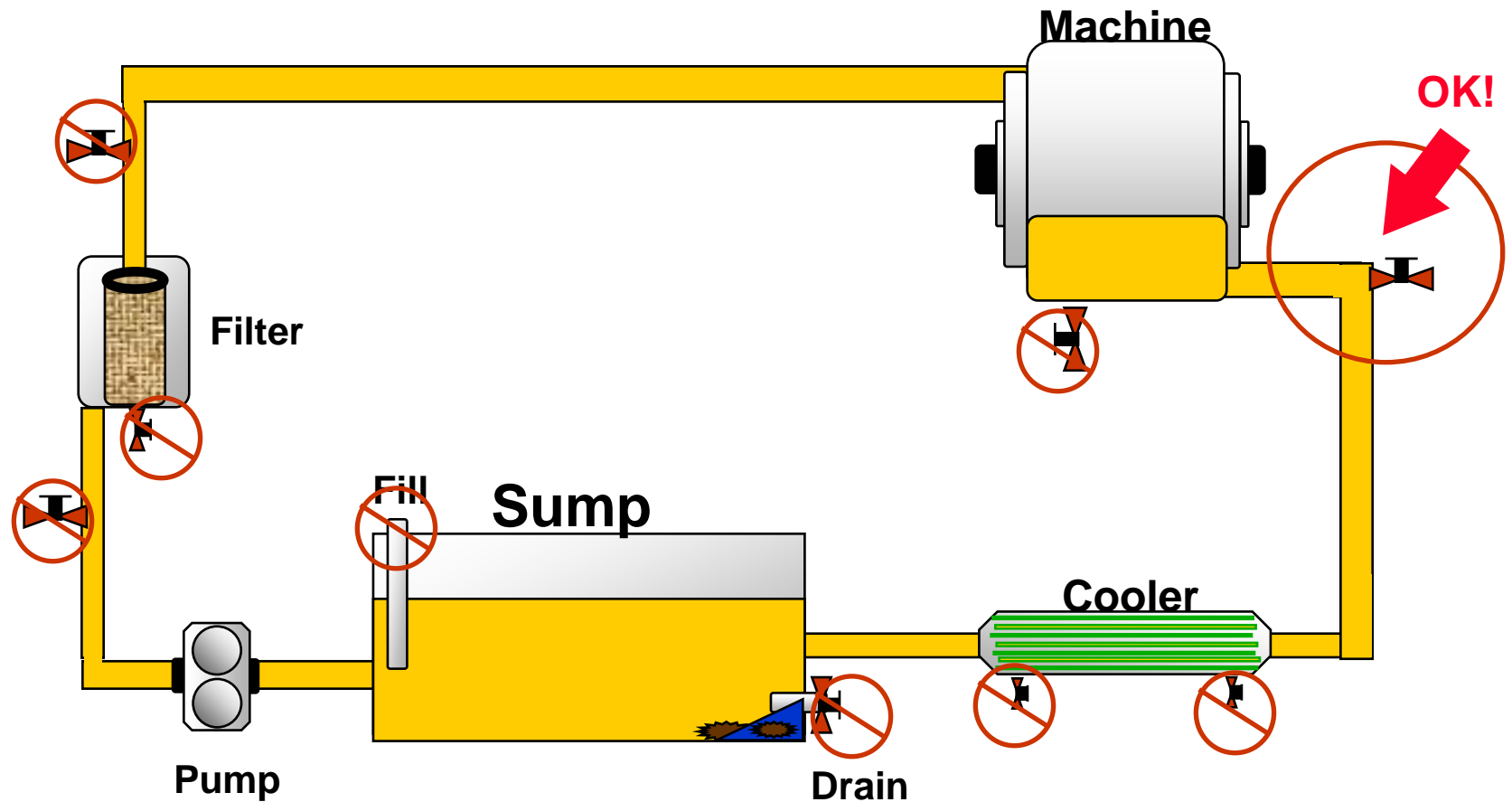
RULES of Sampling

Machine and Lubricant Condition

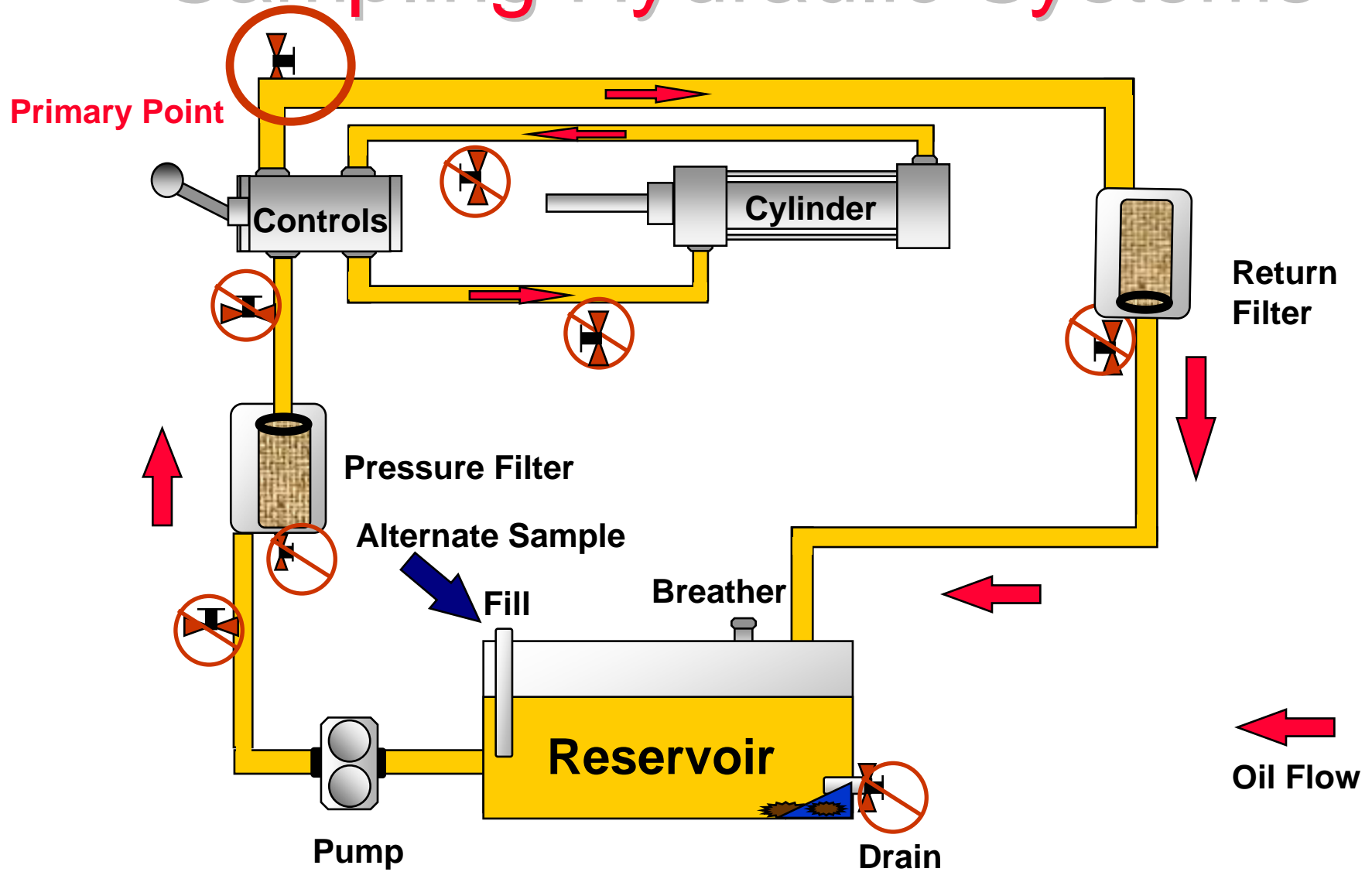
- 1. Take sample downstream of component and upstream of filters, reservoir and pumps*
- 2. Never from a dead line or valve / Turbulent Flow is BEST!*
- 3. Always mixed and warm*
- 4. Always flush sample valves petcocks*
- 5. Use the same method and Location Each Time*
- 6. Do it at regular scheduled intervals*
- 7. Keep sampling gear clean*

Be Consistent!

Sampling for Condition Monitoring



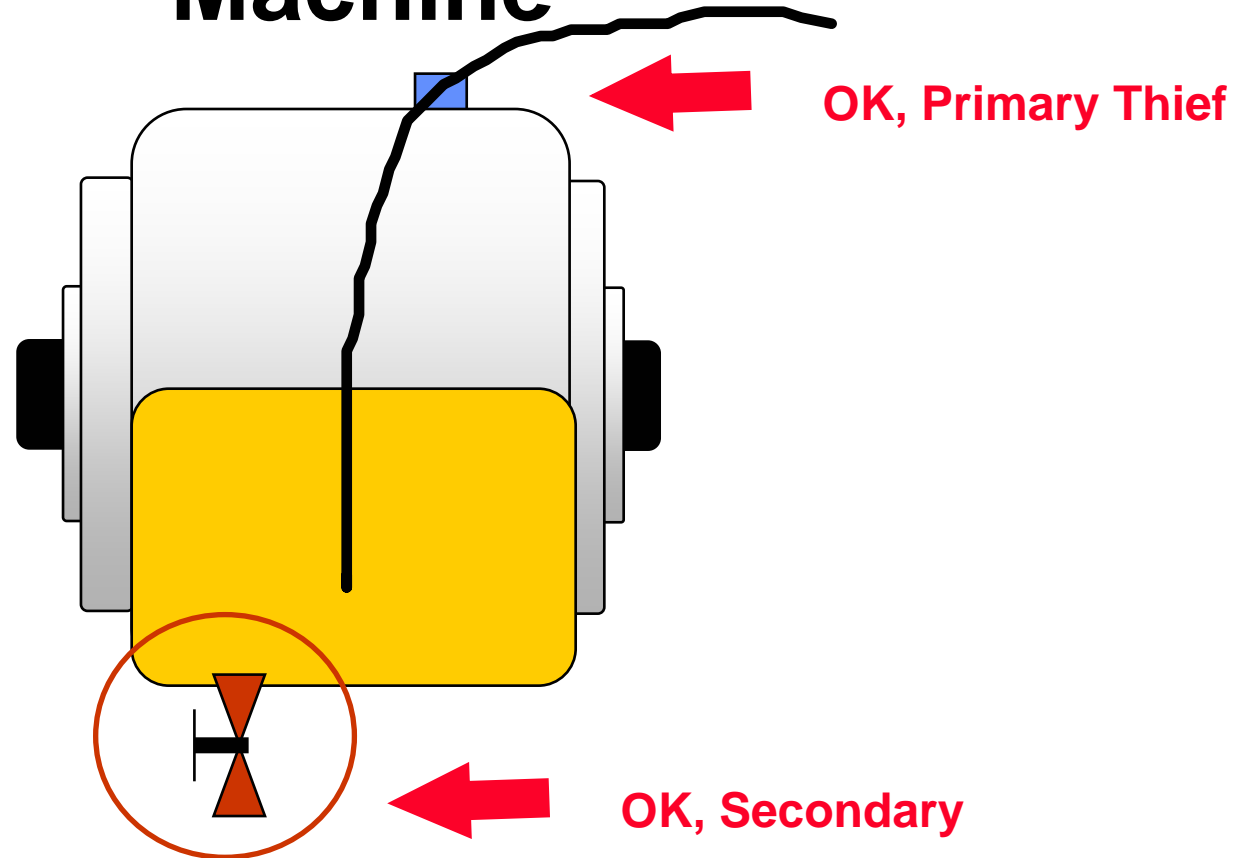
Sampling Hydraulic Systems



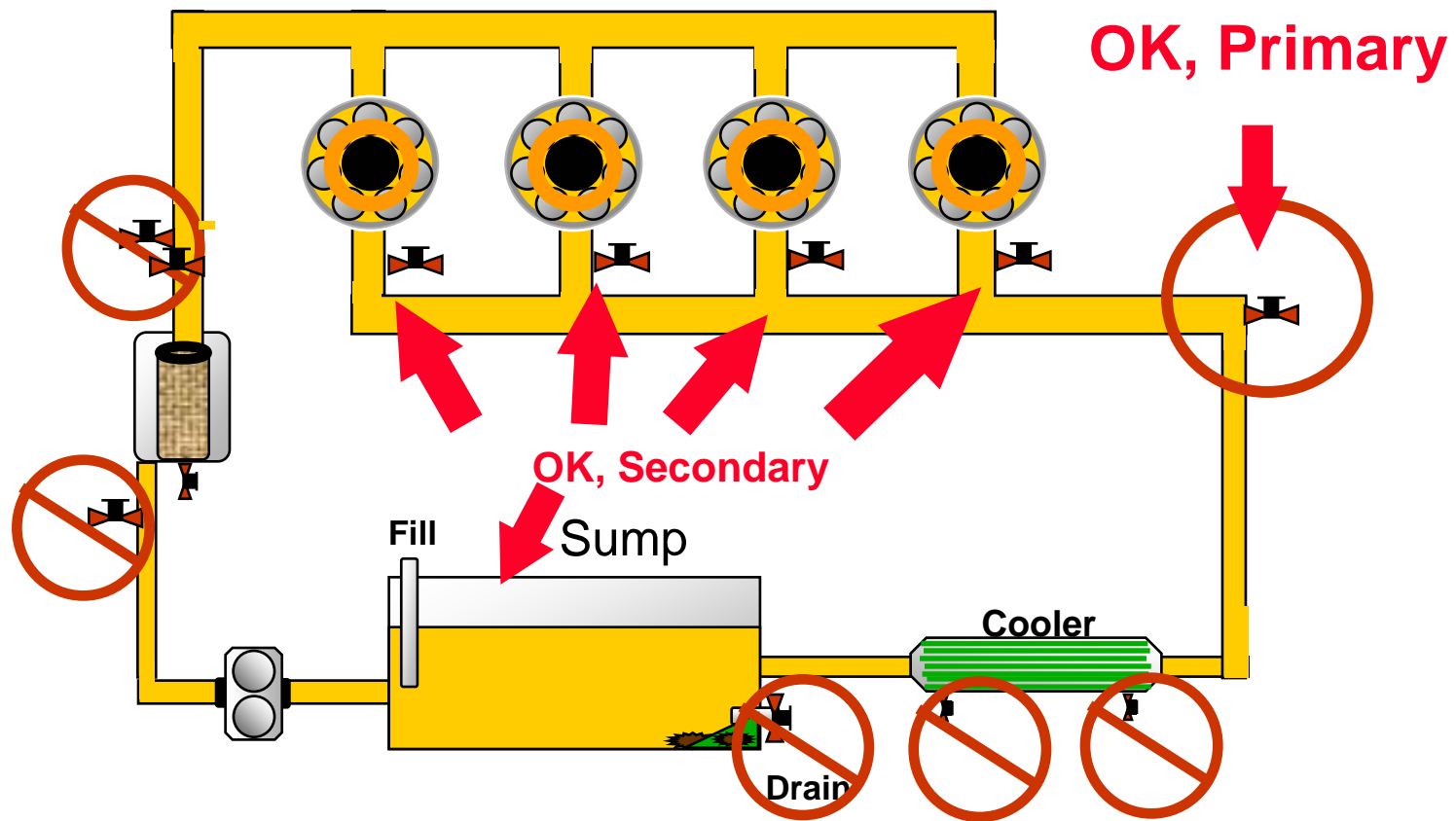
Special Situations

Closed Gearbox / Machine

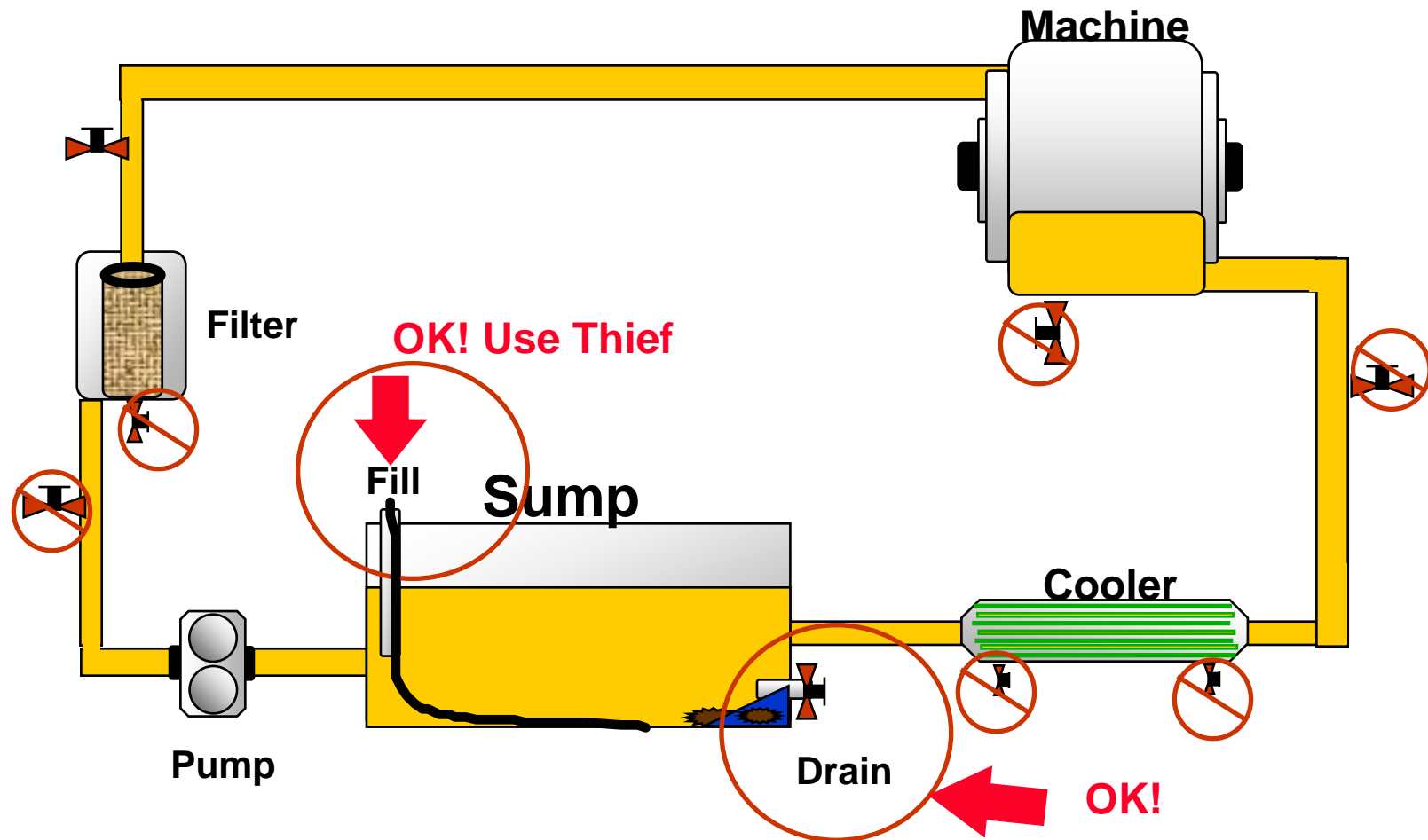
Machine



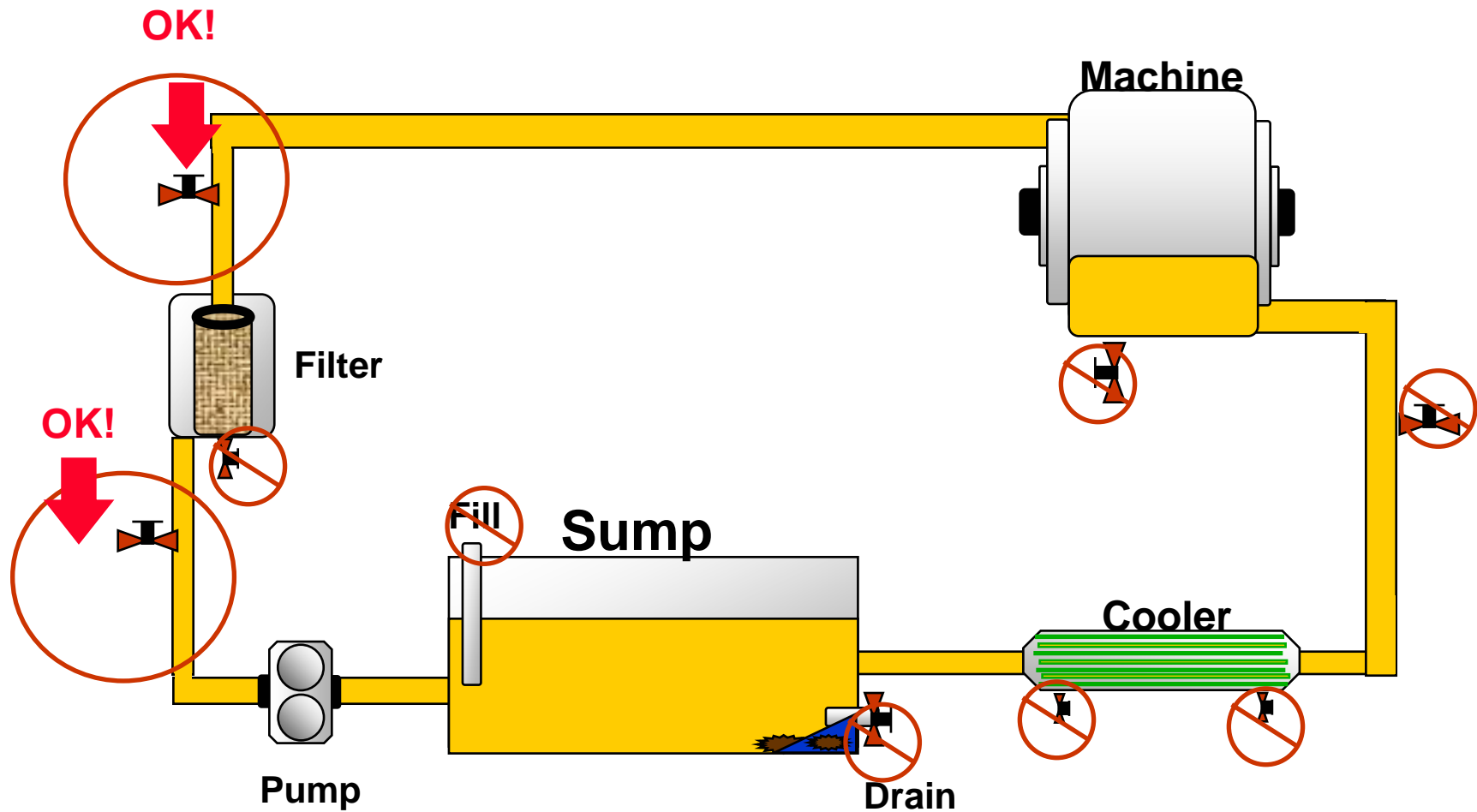
Multiple Bearing / Gears Turbines / Paper Machines / Printers



Sampling for Gross Contamination

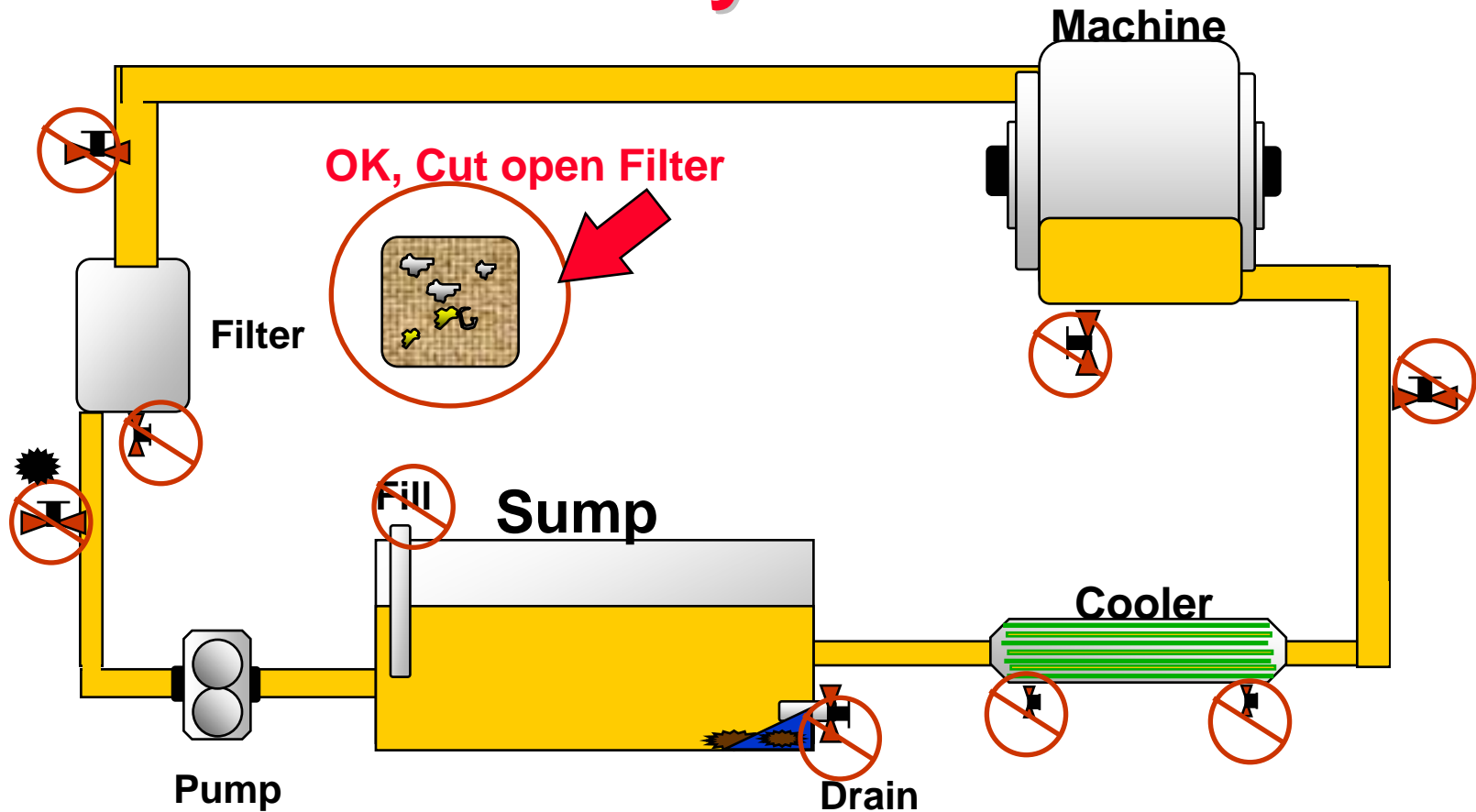


Sampling for Filter Effectiveness

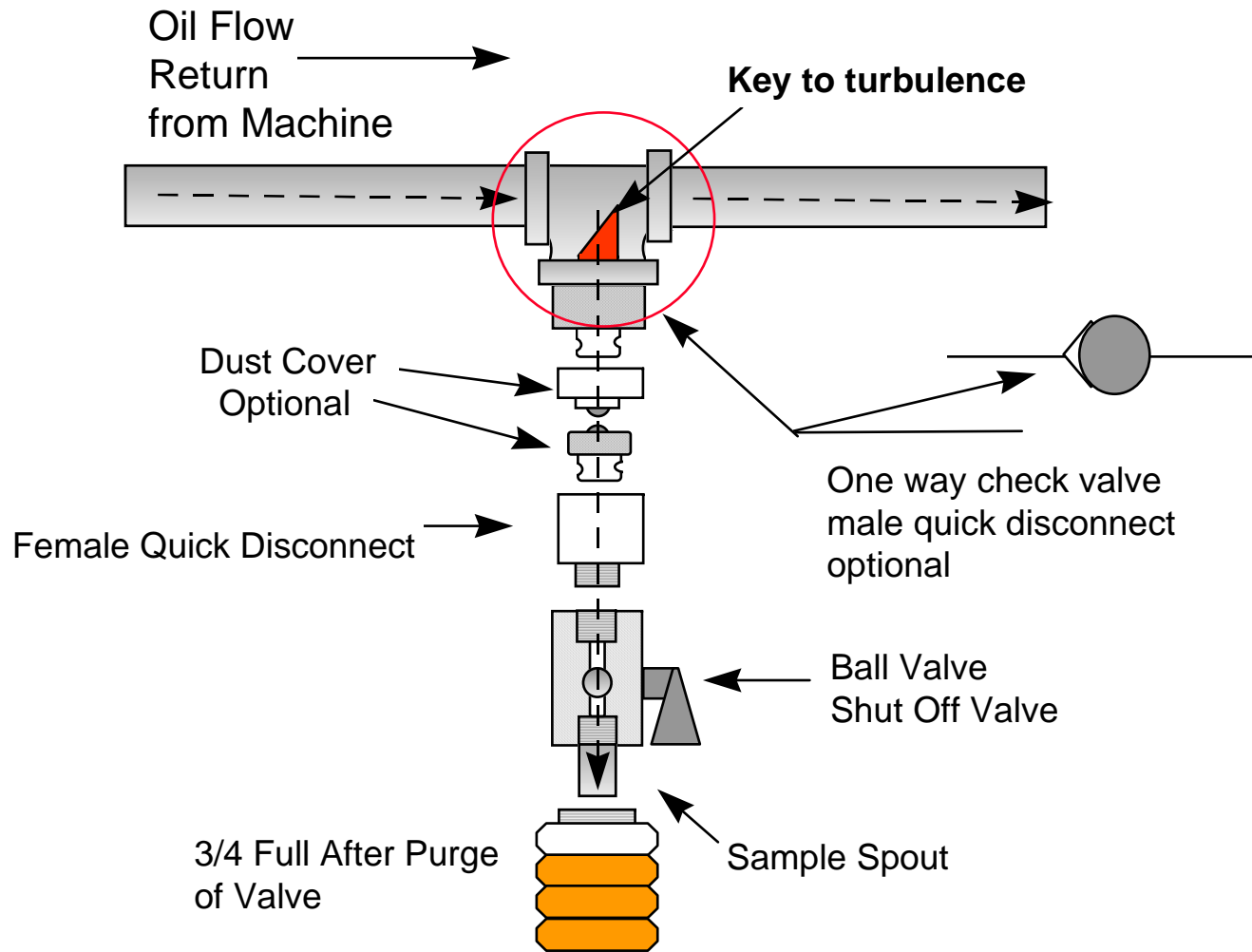


Sampling for Special Situations

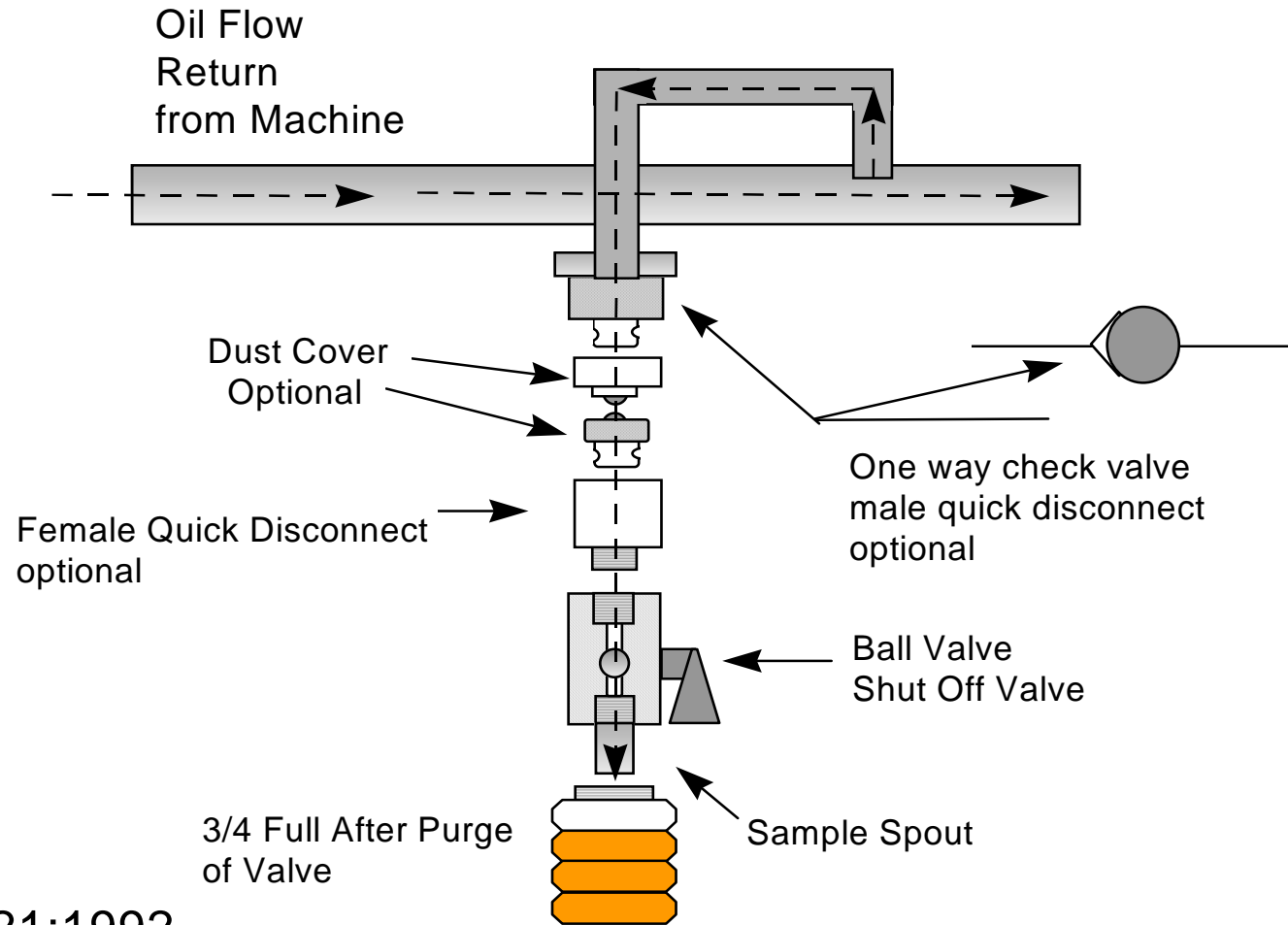
Do your own Wear Particle Analysis



OIL SAMPLING VALVE

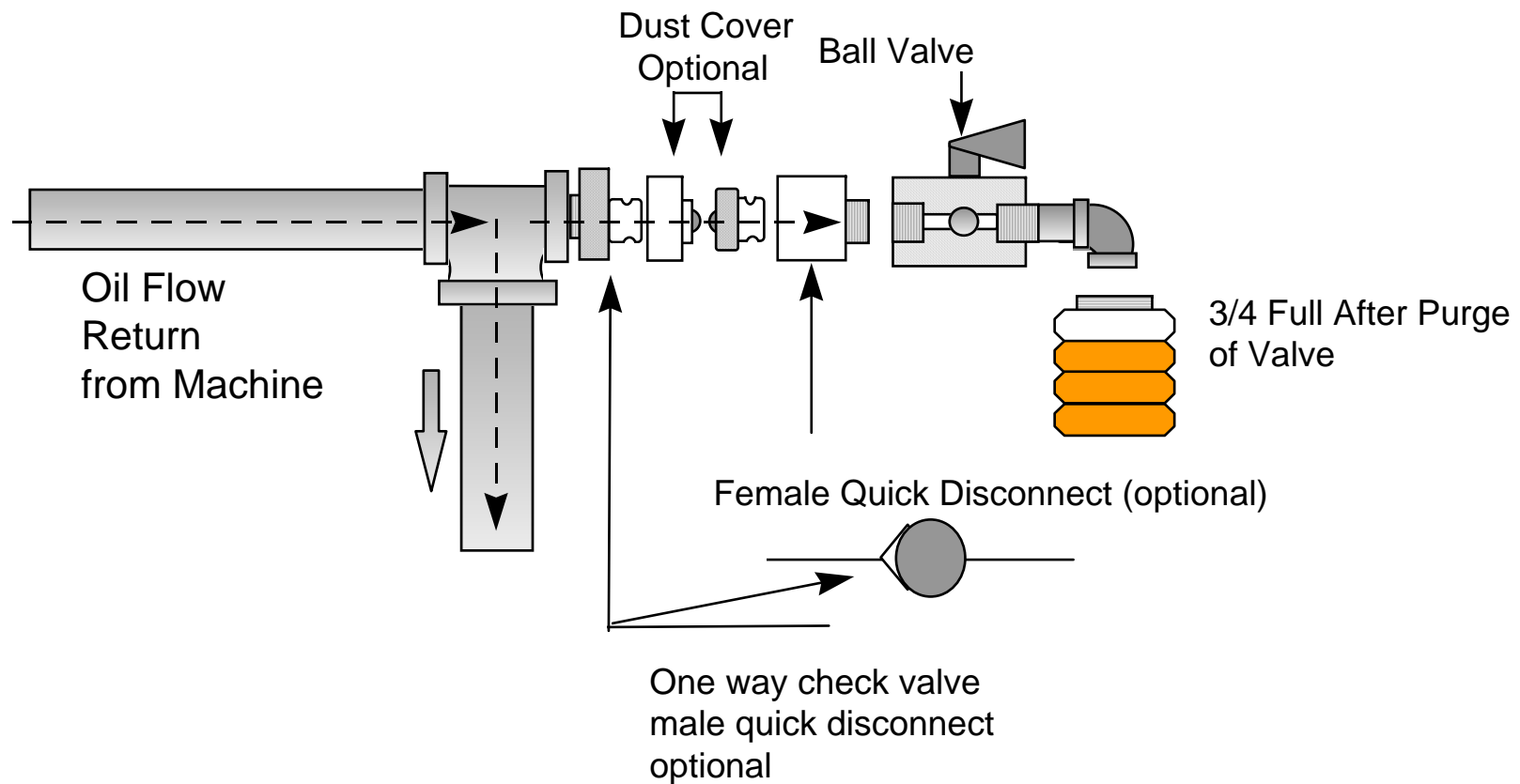


TURBULENT FLOW OIL SAMPLING VALVE



ISO 4021:1992
Hydraulic Fluid Power

TURBULENT FLOW OIL SAMPLING VALVE



Principle of Fluid Extraction Reservoir Sampling

ISO 4021:1992
Hydraulic Fluid Power

